

How We Have Grown to Support Enduring Recovery from Substance Use in Our Communities



10,798

PATIENTS RECEIVED
CARE IN FY2024

AN INCREASE OF
11.62%
OVER FY2023*

9,231

TREATED FOR SUBSTANCE USE
DISORDER AND/OR MENTAL
HEALTH ISSUES

**Inclusive of those treated at the Andre Kennedy Center for Integrated Behavioral Health and Urgent Care, and the pharmacy.*

January 2023

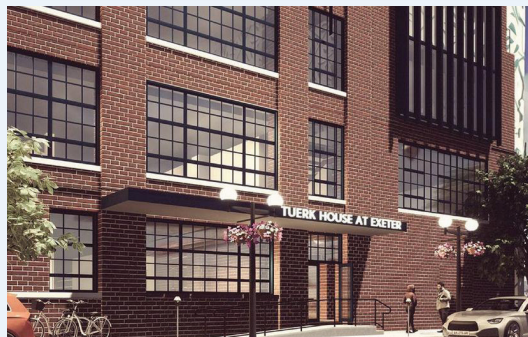
ASHBURTON MAIN CAMPUS \$10.2 MILLION RENOVATION

Completed phase three, including new dining facilities, pharmacy, communal spaces, and a gym to help further improve the health and wellbeing of our patients.

4,800

PRESCRIPTIONS FILLED*

**Since opening to the public in August 2023*



December 2023

PURCHASED A 44,000 SQ FT PROPERTY

311 N. Exeter Street in East Baltimore will ultimately serve 50 adolescents and pregnant adults.

March 2024

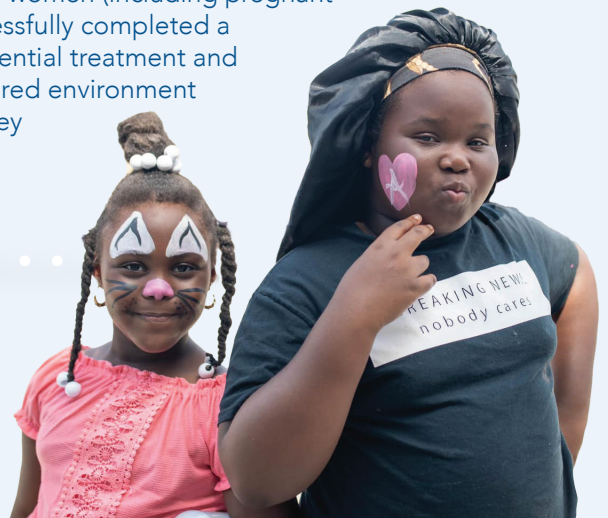
OPENED HIGHLAND HOUSE

A residential facility for women (including pregnant adults) who have successfully completed a high-intensity 3.5 residential treatment and now seek a less structured environment to continue their journey towards sobriety.

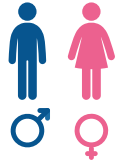


HOSTED 2 COMMUNITY EVENTS

including a Back-to-School Block Party, and a Mental Health Talk and BBQ with renowned expert and therapist Otia Blake, LMSW.



Patient Profile



74.07% MALE/
25.86% FEMALE



61.89% ARE BLACK/
AFRICAN AMERICAN



99% ARE
UNEMPLOYED



28.27% ARE
HOMELESS



99% HAVE MEDICAID
OR ARE UNINSURED

Our Shared Impact

80%

OF PATIENTS
ADMITTED
COMPLETED



OF SOBRIETY
OR WERE
DISCHARGED.



68.03%

OF THOSE ADMITTED INTO THE
CRISIS STABILIZATION CENTER
AGREED TO GO TO TREATMENT.

Financials

Tuerk House ended
FY2024 with a
positive net income
of **\$3.16 million.**



Patient Admissions by Site

Crisis Stabilization Center at Tuerk House	4,160
Howard House	27
Integrated Behavioral Health.....	2,425
Nilsson House*.....	19
Nilsson House for Women*	12
Pharmacy.....	1,567
Sister Augusta Riley House.....	37
Tuerk House Main Campus	2,491
Weisman - Kaplan House	60
Grand Total	10,798

**Nilsson House transitioned from female-only residential living to male only in late January 2024*

Operations Funding Sources

Funder	Amount	Project
Howard County	\$500,000	Howard House Operations
Behavioral Health System Baltimore, Inc.	\$3,635,360	Crisis Stabilization Center
Behavioral Health System Baltimore, Inc.	\$95,000	Integrated Behavioral Health (OMHC)
Behavioral Health System Baltimore, Inc.	\$305,652	Drug Court
Governor's Office of Crime Prevention and Policy for Maryland	\$500,000	Main Campus Operations

Capital Funding Sources

Maryland Department of Health
Anonymous
Larrowe-Robins Fund: Exeter Street Project construction
The Women's Giving Circle of Howard County: Highland House capital improvements
Rotary Club of Columbia-Patuxent: Highland House capital improvements